

Munising Falls Area

Day Hikes

Pictured Rocks National Lakeshore
National Park Service
Department of the Interior



Munising Falls

The walk to Munising Falls is a leisurely 800 feet from the Interpretive Center. The trail is paved and is disabled accessible. Two spur trails lead to overlook platforms on either side of the falls. Please remain behind the barriers at all three overlook platforms to avoid the possibility of injury from falling rock. Several rest benches are located along this short trail. Watch for mink along the creek. *Please leave all wildflowers for others to enjoy.*

Schoolcraft Blast Furnace

The Schoolcraft or Munising blast furnace operated here intermittently from 1869 to 1877. The furnace was located on a small level piece of land on the far side of the creek to your left as you walk toward Munising Falls. In spring and fall, before and after vegetation obscures the view, you can see the cone shaped pile of debris left after the collapse of the stone furnace. The iron and charcoal industry was the hub of a short-lived boom town of Old Munising where some 500 people once lived. *Watch for wood beams and the large disk of slag in the creek from the furnace days.*

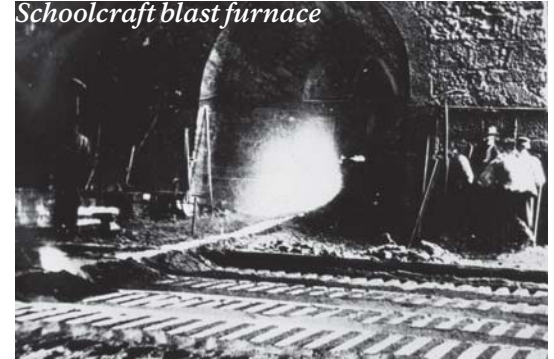
North Country National Scenic Trail

The North Country Trail (NCT) trailhead is located adjacent to the Interpretive Center. The trail eventually leads to Grand Marais, some 42 miles away. Overnight backpackers hike the trail in 3-5 days, staying at 13 backcountry campsites along the way. A backcountry permit is required for overnight camping in the park. Day hikers are welcome to hike this trail and portions of the Munising Cross-Country Ski Trails that connected with it. A nice hike of 2.9 miles on the NCT leads to Sand Point. *You can then either return by the same trail or walk along Sand Point Road.*

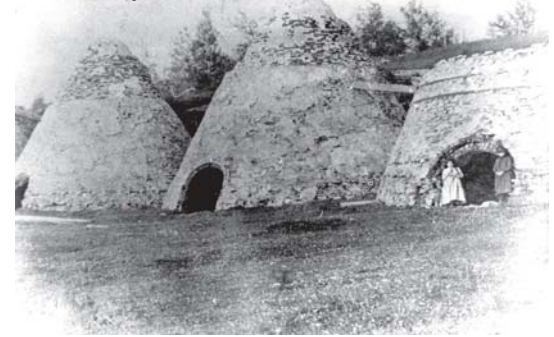
Former Becker Farm Fields

The clearing at the top of the hill north of here marks the Becker farm, which operated from around the turn of the century till 1966 when the Lakeshore purchased the property. The dairy farm once included several pastures, a garden, and an unusual round barn. The barn fell into disrepair before the park could restore it, and was eventually demolished. As you walk the old hay pastures, watch for apple trees that continue to bear fruit every year.

Schoolcraft blast furnace



Schoolcraft charcoal kilns



Old Munising, ca. 1870



Becker farm



Munising Bay Lake Superior

Lakeshore
Headquarters

To Miners Castle - 4.1 mi.



Sand Point
Marsh Trail

Stairs

Sand Point Beach



North Country
National Scenic Trail



Munising Ski
Trail System

Munising Ski Trail
Mileages and Difficulty

A	2.4	Easy
B	1.9	Difficult
C	1.4	Intermediate
D	1.0	Easy
E	.8	Easy
F	1.7	Intermediate
G	1.5	Easy
H	1.0	Intermediate
<hr/>		
	11.7	miles

Sand Point Road



Snowmobile
Trail - Caution!

NOTICE:

Portions of the trail are along sheer cliffs - stay on the trail. Pets are not permitted on hiking or ski trails. Portions of these trails are very wet in summer.

E. City Limits Rd.

H-58

H-58



Munising Falls

